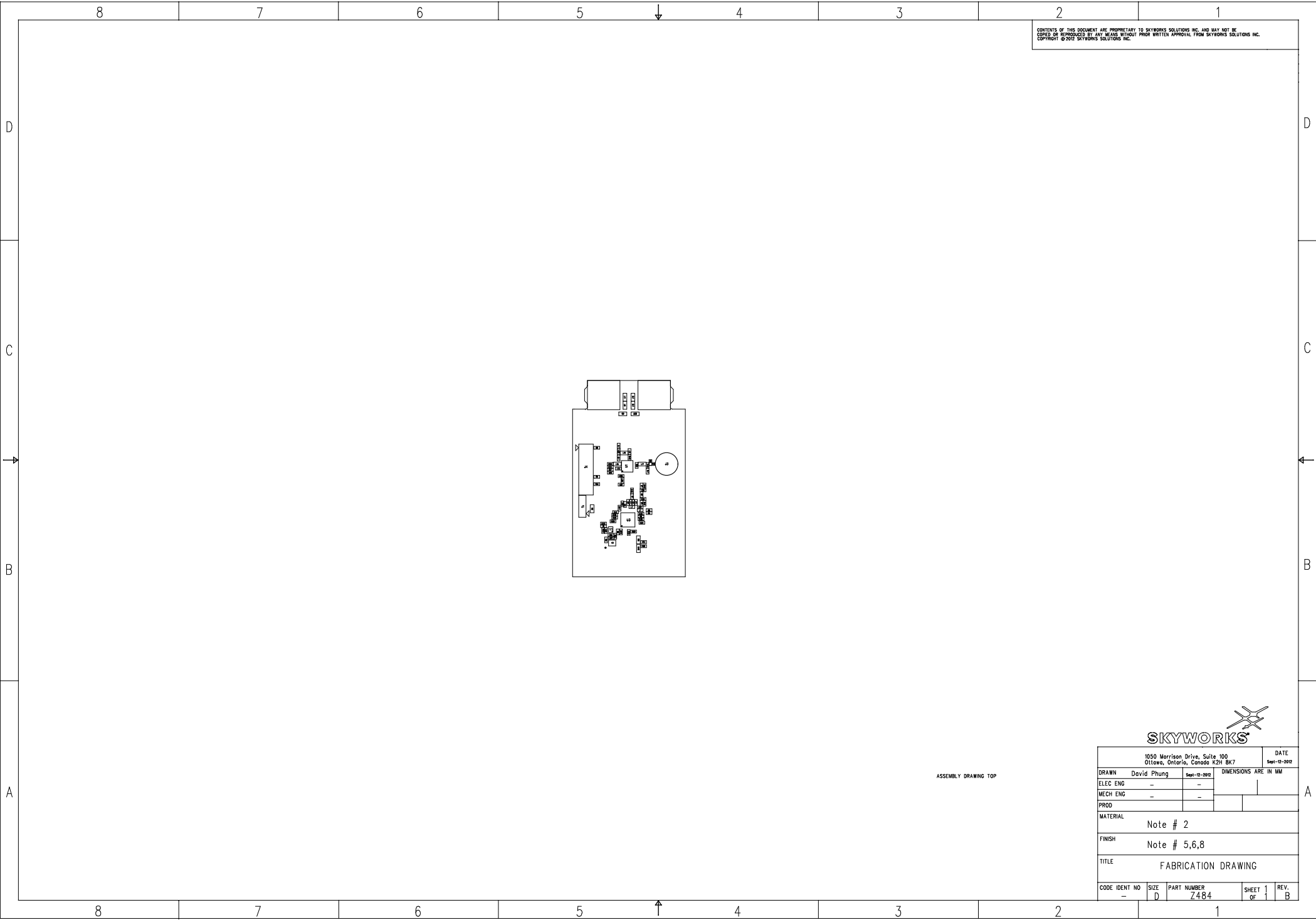


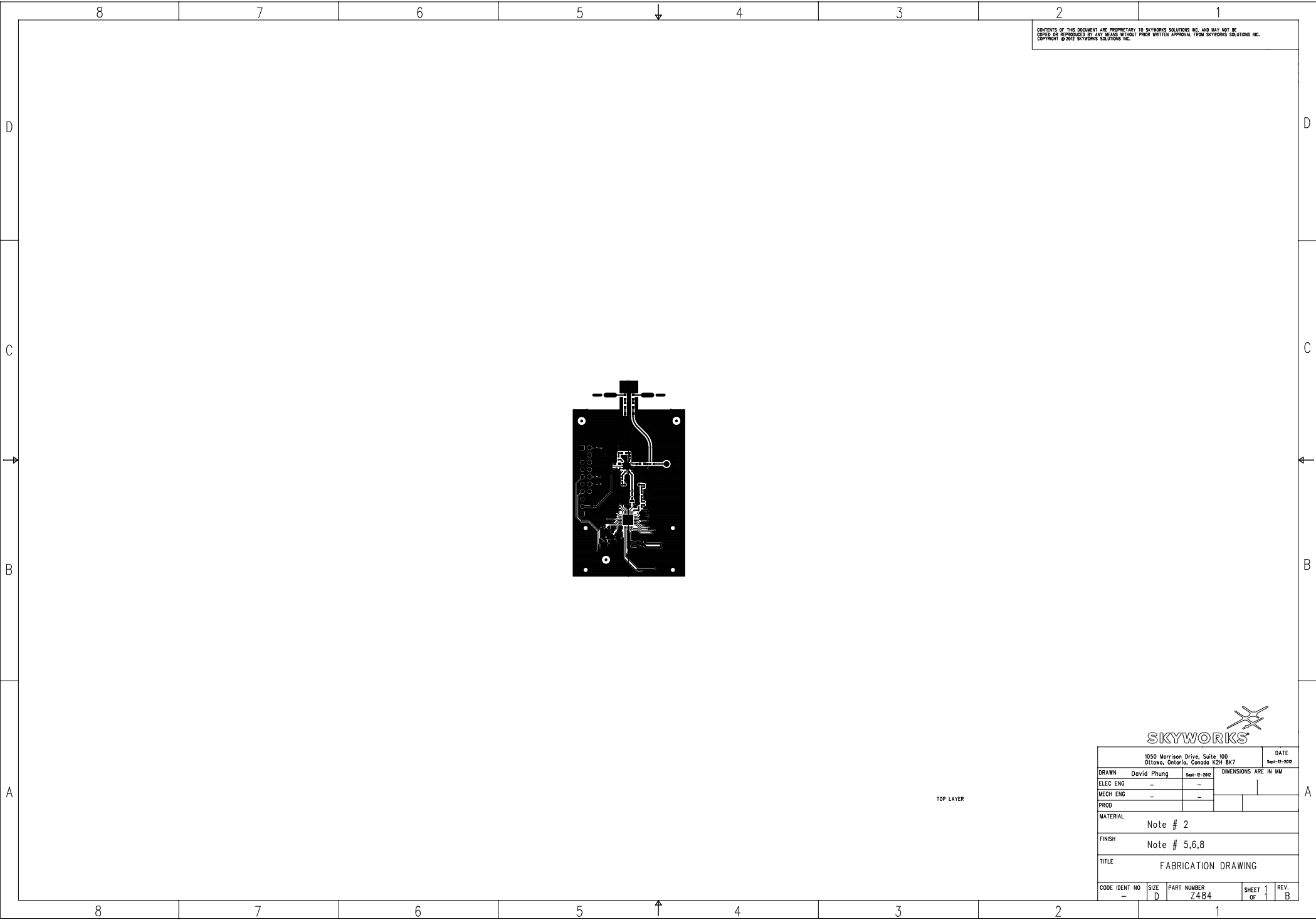
CONTENTS OF THIS DOCUMENT ARE PROPRIETARY TO SKYWORKS SOLUTIONS INC. AND MAY NOT BE
COPIED OR REPRODUCED BY ANY MEANS WITHOUT PRIOR WRITTEN APPROVAL FROM SKYWORKS SOLUTIONS INC.
COPYRIGHT © 2012 SKYWORKS SOLUTIONS INC.

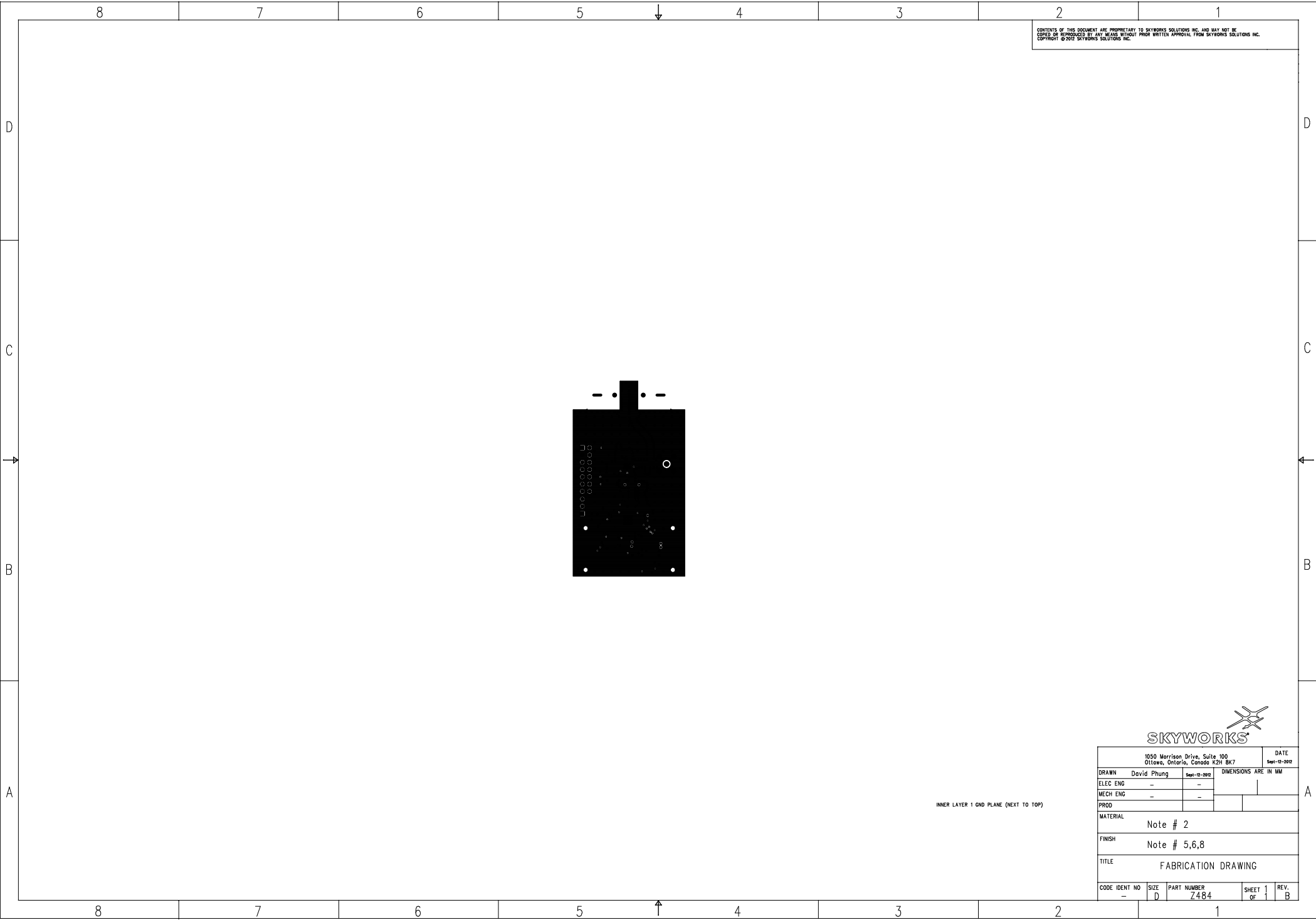


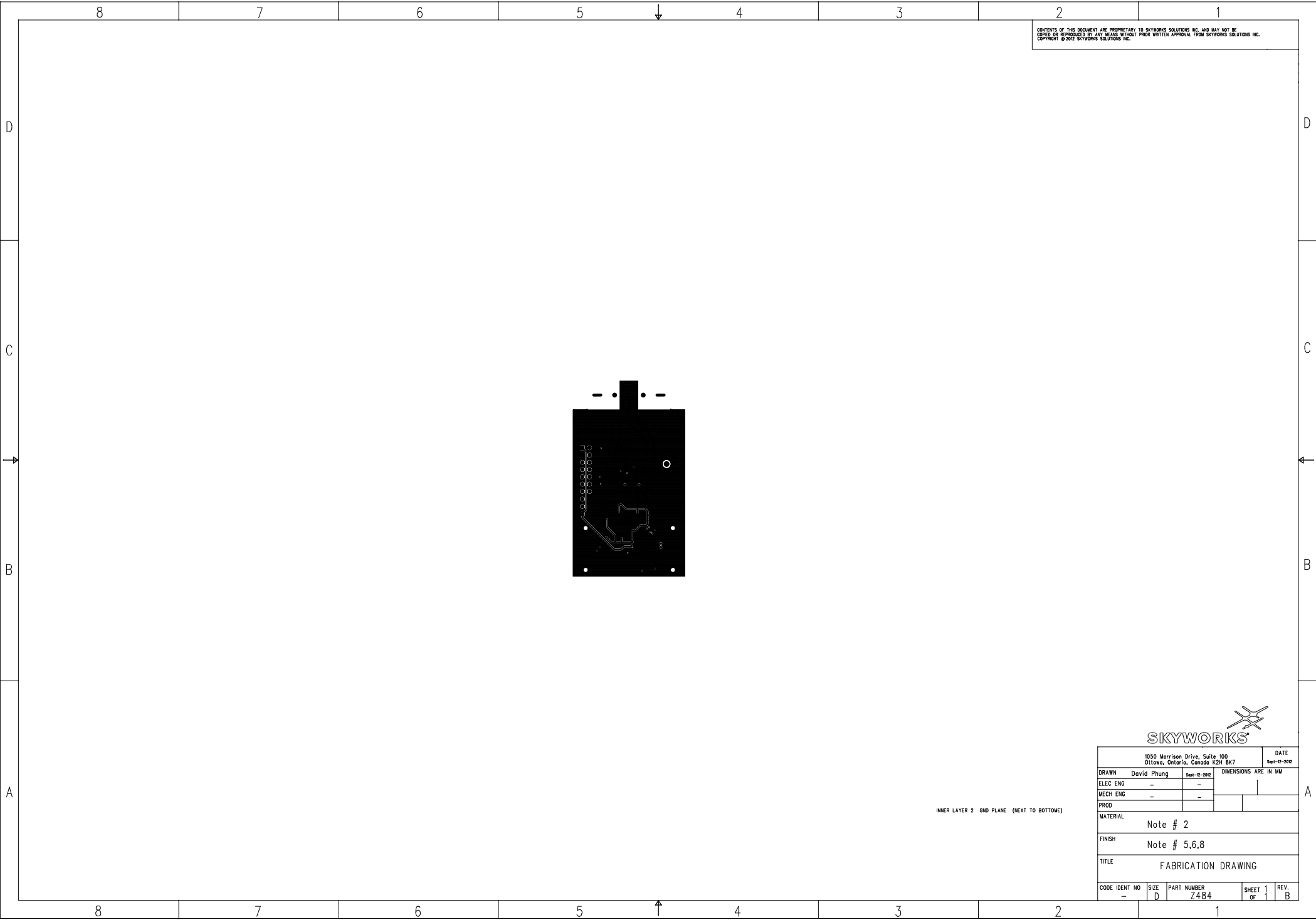
1050 Morrison Drive, Suite 100 Ottawa, Ontario, Canada K2H 8K7				DATE Sept-12-2012	
DRAWN	David Phung	Sept-12-2012	DIMENSIONS ARE IN MM		
ELEC ENG	-	-			
MECH ENG	-	-			
PROD					
MATERIAL			Note # 2		
FINISH			Note # 5,6,8		
TITLE			FABRICATION DRAWING		
CODE IDENT NO	SIZE	PART NUMBER	SHEET OF	REV.	
-	D	Z484	1 OF 1	B	

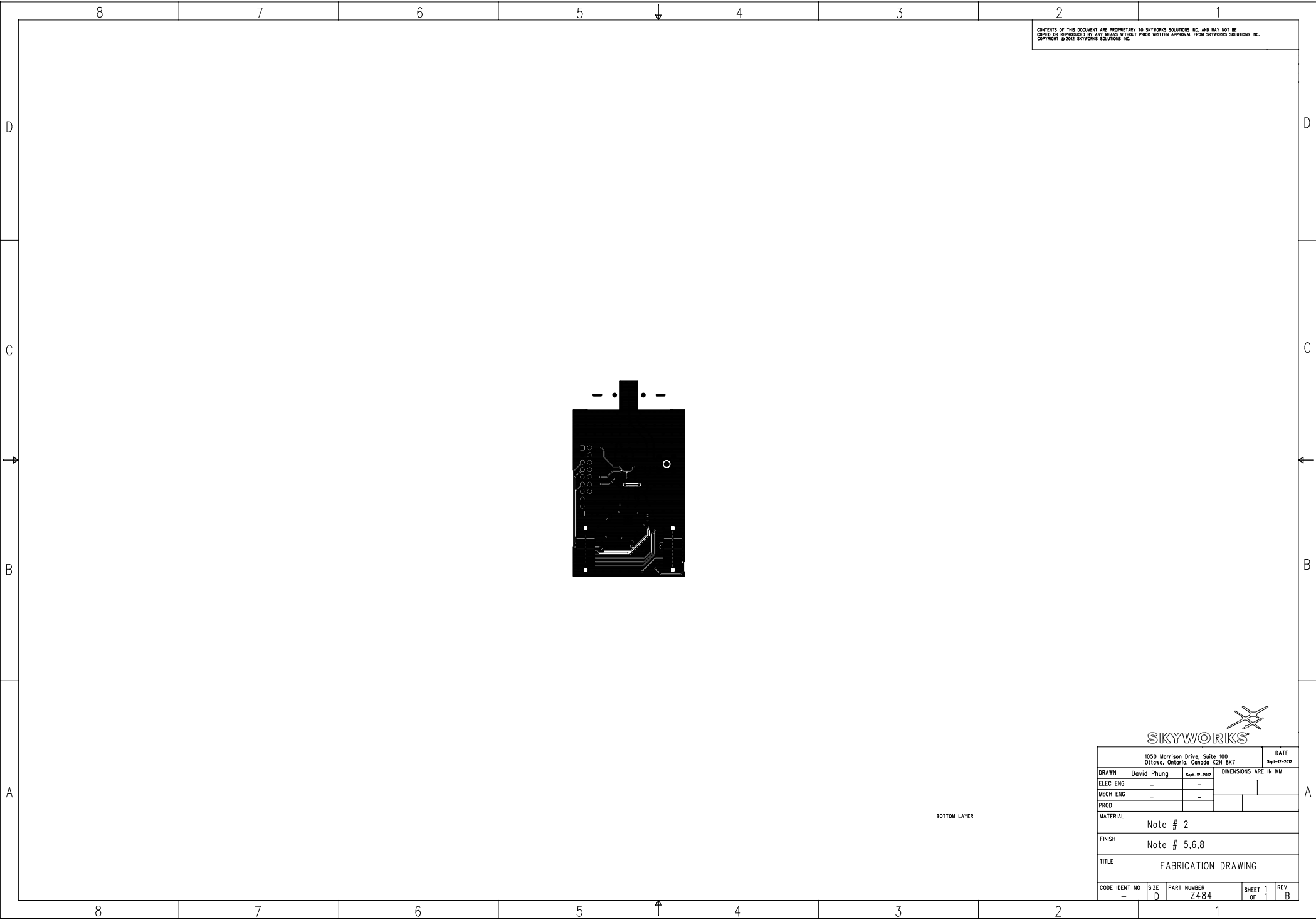


1050 Morrison Drive, Suite 100 Ottawa, Ontario, Canada K2H 8K7				DATE Sept-12-2012	
DRAWN	David Phung	Sept-12-2012	DIMENSIONS ARE IN MM		
ELEC ENG	-	-			
MECH ENG	-	-			
PROD					
MATERIAL					
Note # 2					
FINISH					
Note # 5,6,8					
TITLE					
FABRICATION DRAWING					
CODE IDENT NO	SIZE	PART NUMBER	SHEET	REV.	
-	D	7484	1 of 1	1 B	









CONTENTS OF THIS DOCUMENT ARE PROPRIETARY TO SKYWORKS SOLUTIONS INC. AND MAY NOT BE
COPIED OR REPRODUCED BY ANY MEANS WITHOUT PRIOR WRITTEN APPROVAL FROM SKYWORKS SOLUTIONS INC.
COPYRIGHT © 2012 SKYWORKS SOLUTIONS INC.



1050 Morrison Drive, Suite 100 Ottawa, Ontario, Canada K2H 8K7					DATE Sept-12-2012	
DRAWN	David Phung		Sept-12-2012		DIMENSIONS ARE IN MM	
ELEC ENG	-		-			
MECH ENG	-		-			
PROD						
MATERIAL						
Note # 2						
FINISH						
Note # 5,6,8						
TITLE						
FABRICATION DRAWING						
CODE IDENT NO	SIZE	PART NUMBER		SHEET	1	REV.
-	D	7484		OF	1	B

0.80mm +/- 0.08mm

- SILKSCREEN TOP
- SOLDER MASK - TOP
- METAL LAYER 1 - TOP; 1-0Z CU
- CORE 1: ISOLA FR406; THICKNESS=0.254mm (.010")
- PREPREG 2 - PLANE LAYER; 1-0Z CU
- METAL LAYER 3 - PLANE LAYER; 1-0Z CU
- CORE 2: ISOLA FR406; THICKNESS=0.254mm (.010")
- METAL LAYER 4 - BOTTOM; 1-0Z CU
- SOLDER MASK - BOTTOM
- SILKSCREEN BOTTOM

FABRICATION NOTES:

1. BOARD TYPE AND DIMENSION
4 LAYER LAMINATE

2. SUBSTRATE MATERIAL PROPERTIES

2. SUBSTRATE MATERIAL PROPERTIES
MATERIAL: (CORE AND PREPREG) ISOLA FR406

ELECTRICAL PROPERTIES: T_g > 170 DEG. C,
1000 HANSEN $T = 1.15$; $\epsilon = 2.91$.

LOSS TANGENT @ 1 MHz = 0.014
DIELECTRIC CONSTANT @ 1.0 GHz = 4.29

STACK-UP PER FIGURE 1. (AT LEFT)

3. COPPER
Cu 50% THICKNESS (ALL LAYERS): 1/2-07 17.8 μm \pm / - 5 μm [0.007" \pm / - 0.002"]

Cu PLATING THICKNESS ON OUTER LAYERS: 25um

EXPOSED COPPER ALONG THE BOARD EDGE IS PERMISSIBLE ON ALL LAYERS

4. VIAS

ALL PLATED HOLES TO HAVE 25 μ m (.001")

ALL VIAS AND PLATED THRU-HOLES TO BE LOCATED
ANNULAR RING OF 125 μ m (.005") NOMINAL. 100 μ m

5. HOSPITALIZATION CHARGE

51. METALLIZATION FINISH
GOLD OVER NICKEL

IMMERSION GOLD (ENIG)

6. SOLDER MASK
SOLDER MASK PER IPC-SM-840, TYPE A, CLASS 3

COLOUR: TRANSPARENT GREEN

THICKNESS 25 μm \pm 10 μm [.001" \pm .0004"]

COMPONENT PADS TO BE FREE OF SOLDER MASK, EXCEPT WHERE SPECIFIED BY DESIGN

(e.g. SOLDERMASK DEFINED PADS)

7. CONDUCTORS

FINAL CONDUCTOR AND PAD WIDTHS TO BE WITHIN 25 μm (.001") OF ARTWORK ORIGINALS
REGISTRATION $\pm 50 \mu\text{m}$ (.002")

50- Ω M (+/-10%) IMPEDANCE TRANSMISSION LINES REQUIRED ON TOP LAYER
COPLANAR WAVEGUIDE WIDTH = 0.486mm, GAP = 0.500mm;

FABRICATOR MUST INFORM, BEFOREHAND, OF DEVIATIONS RE
TRANSMISSION LINE IMPEDANCE MEASUREMENT REPORT REQUI

TRANSMISSION LINE IMPEDANCE REASSESSMENT REPORT REQUIRED

8. SILKSCREEN

SHOOT SILKSCREEN THROUGH SOLDER MASK; COMPONENT PADS TO

T1-PIN1 SILKSCREEN DOT CAN BE SHIFTED OR CROPPED TO CLEAR U1 KEEPOUT AREA

9. DATE/LOT CODE
FABRICATOR SHALL SILKSCREEN DATE/LOT CODE ON BOTTOM SIDE

FABRICATOR LOGO SHALL APPLY ON BOTTOM SILSCREEN

10. ELECTRICAL TEST STAMP

FABRICATOR SHALL TEST AND STAMP PASSED CIRCUITS ON THE BOTTOM SIDE

11. PANELIZATION
CIRCUIT ARRAY NOT REQUIRED; OPTIMIZE CIRCUIT ARRANGEMENT FOR BEST PANEL YIELD

CIRCUIT ARRAY NOT REQUIRED; OPTIMIZE CIRCUIT
BOARDS MUST BE ROUTED AND FREE OF BURRS

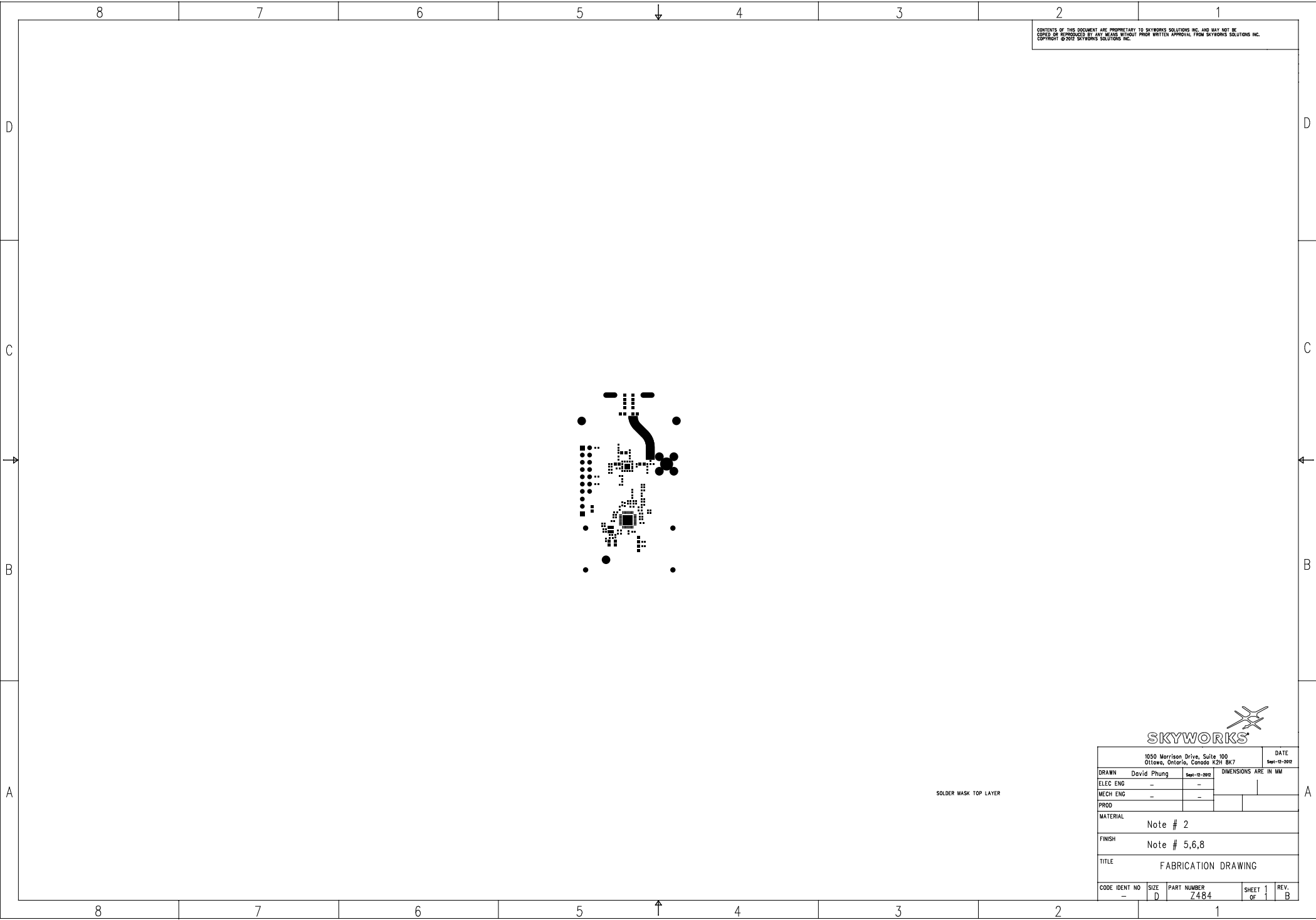
12. OTHER APPLICABLE SPECIFICATIONS AND STANDARDS

PRINTED CIRCUIT BOARD WORKMANSHIP SHALL CONFORM TO IPC-A-600 CLASS 3 UNLESS IN CONFLICT WITH ABOVE SPECIFICATIONS. PRINTED CIRCUIT BOARD SHALL

Downloaded At: 11:53 11 September 2009



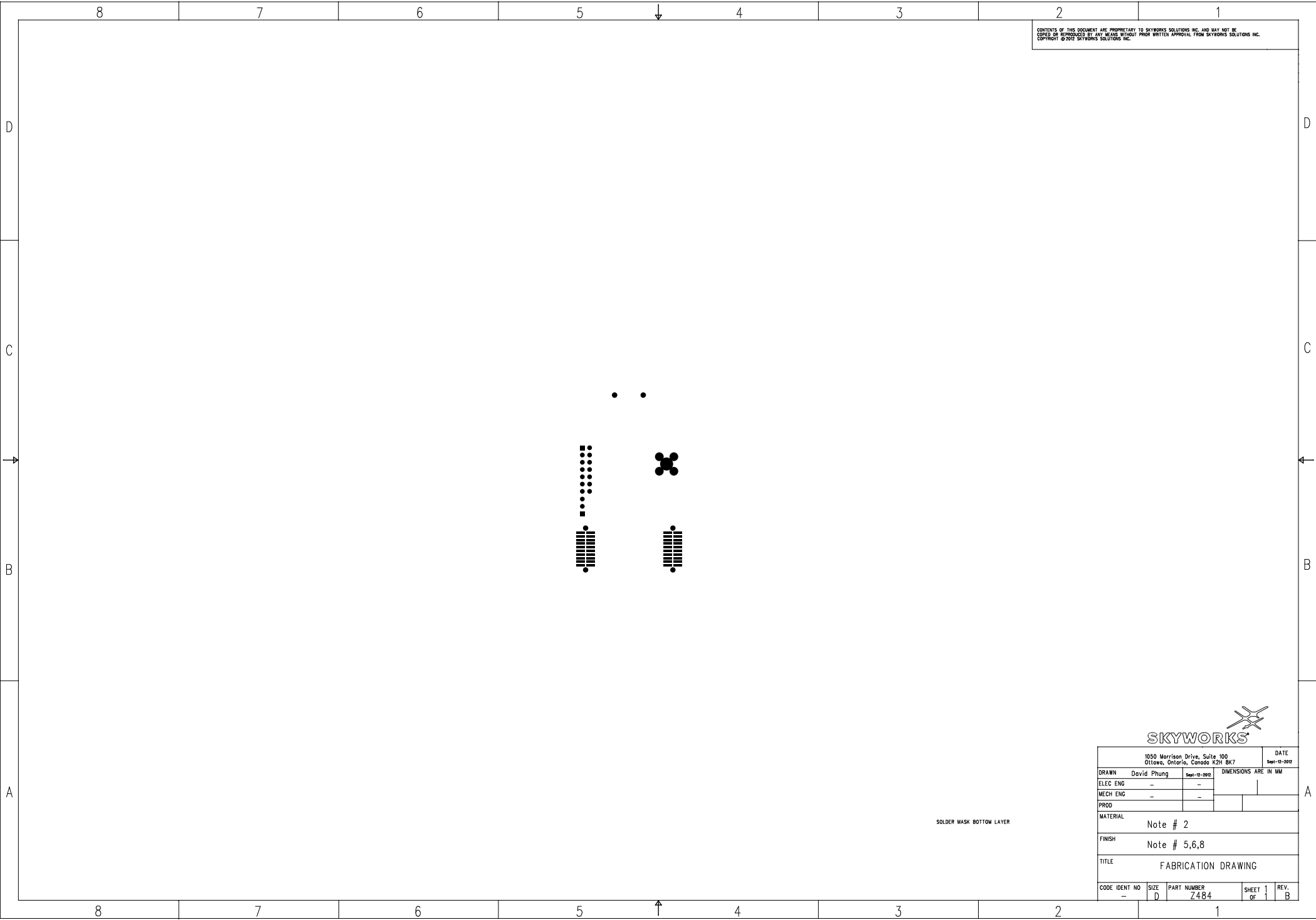
HOLE SIZES ARE FINAL DIMENSIONS AFTER PLATING

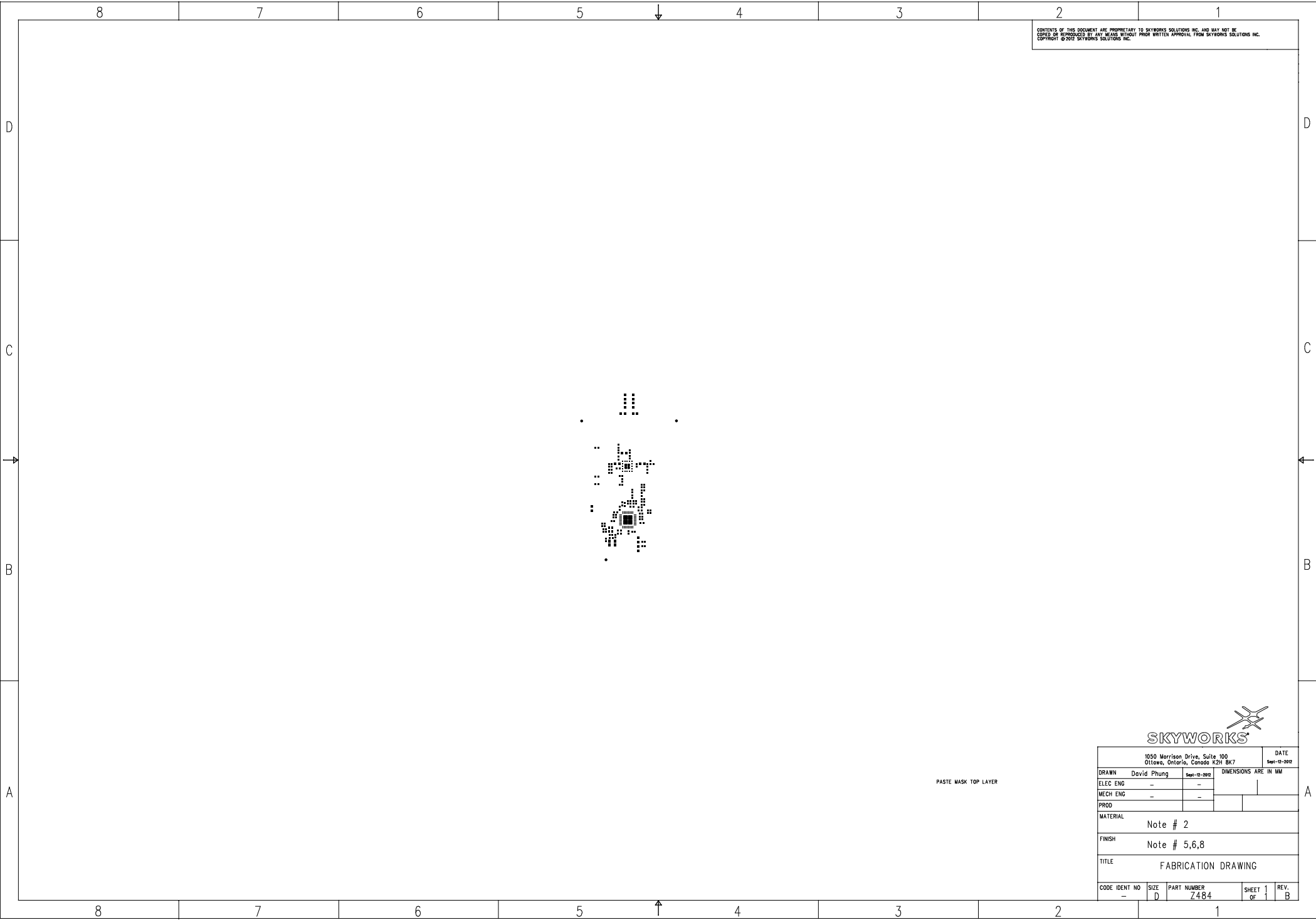


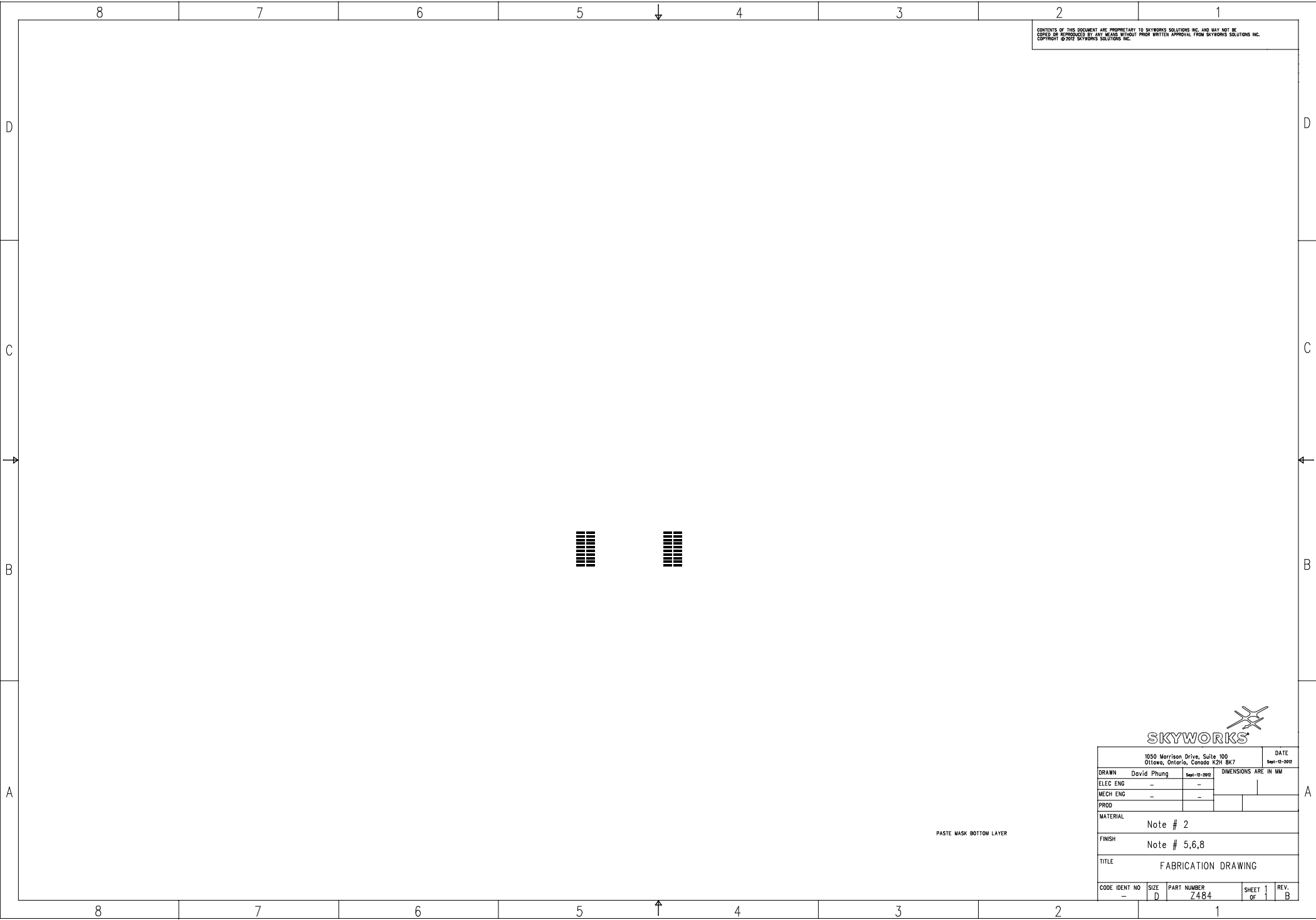
CONTENTS OF THIS DOCUMENT ARE PROPRIETARY TO SKYWORKS SOLUTIONS INC. AND MAY NOT BE
COPIED OR REPRODUCED BY ANY MEANS WITHOUT PRIOR WRITTEN APPROVAL FROM SKYWORKS SOLUTIONS INC.
COPYRIGHT © 2012 SKYWORKS SOLUTIONS INC.



1050 Morrison Drive, Suite 100 Ottawa, Ontario, Canada K2H 8K7				DATE Sept-12-2012	
DRAWN	David Phung	Sept-12-2012	DIMENSIONS ARE IN MM		
ELEC ENG	-	-			
MECH ENG	-	-			
PROD					
MATERIAL					
Note # 2					
FINISH					
Note # 5,6,8					
TITLE					
FABRICATION DRAWING					
CODE IDENT NO	SIZE	PART NUMBER	SHEET	1	REV.
-	D	7484	OF	1	B





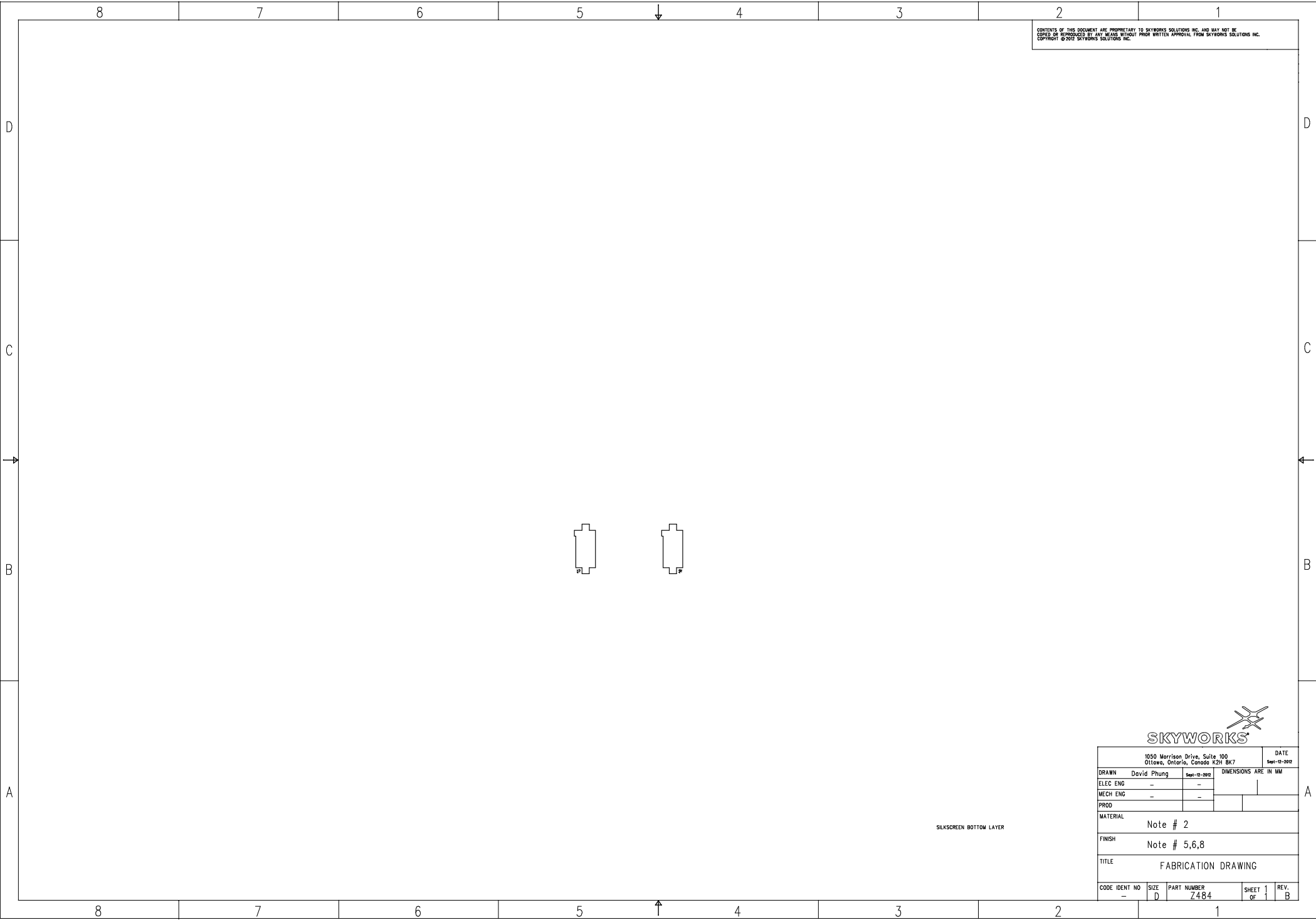


CONTENTS OF THIS DOCUMENT ARE PROPRIETARY TO SKYWORKS SOLUTIONS INC. AND MAY NOT BE
COPIED OR REPRODUCED BY ANY MEANS WITHOUT PRIOR WRITTEN APPROVAL FROM SKYWORKS SOLUTIONS INC.
COPYRIGHT © 2012 SKYWORKS SOLUTIONS INC.



1050 Morrison Drive, Suite 100 Ottawa, Ontario, Canada K2H 8K7					DATE Sept-12-2012	
DRAWN	David Phung		Sept-12-2012		DIMENSIONS ARE IN MM	
ELEC ENG	-		-			
MECH ENG	-		-			
PROD						
MATERIAL						
Note # 2						
FINISH						
Note # 5,6,8						
TITLE						
FABRICATION DRAWING						
CODE IDENT NO	SIZE	PART NUMBER			SHEET	REV.
-	D	Z484			OF 1	B

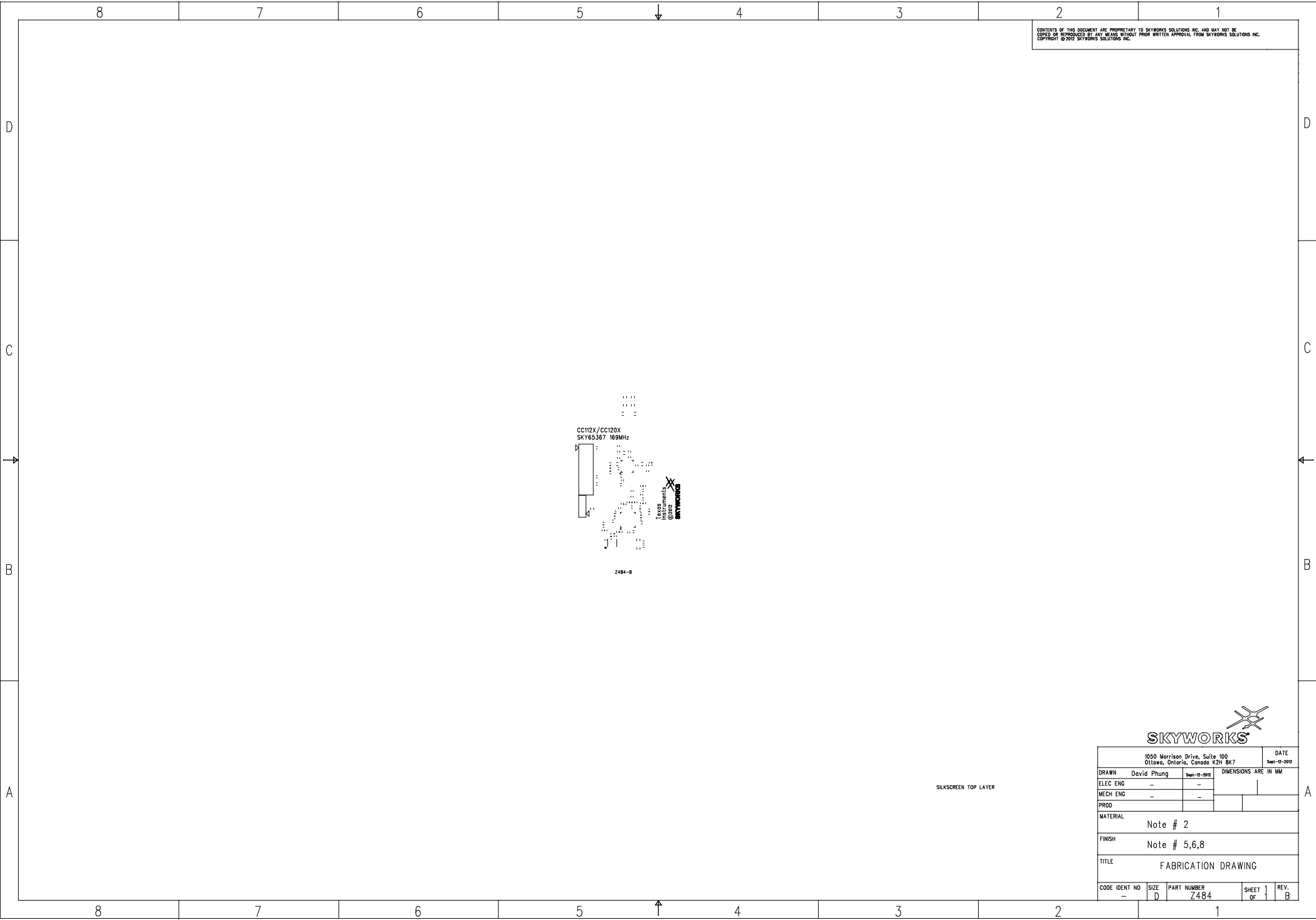
PASTE MASK BOTTOM LAYER



CONTENTS OF THIS DOCUMENT ARE PROPRIETARY TO SKYWORKS SOLUTIONS INC. AND MAY NOT BE
COPIED OR REPRODUCED BY ANY MEANS WITHOUT PRIOR WRITTEN APPROVAL FROM SKYWORKS SOLUTIONS INC.
COPYRIGHT © 2012 SKYWORKS SOLUTIONS INC.

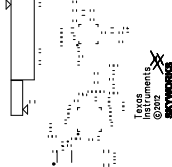


1050 Morrison Drive, Suite 100 Ottawa, Ontario, Canada K2H 8K7				DATE Sept-12-2012
DRAWN	David Phung	Sept-12-2012	DIMENSIONS ARE IN MM	
ELEC ENG	-	-		
MECH ENG	-	-		
PROD				
MATERIAL			Note # 2	
FINISH			Note # 5,6,8	
TITLE			FABRICATION DRAWING	
CODE IDENT NO	SIZE	PART NUMBER	SHEET OF	REV.
-	D	Z484	1 1	B



CONTENTS OF THIS DOCUMENT ARE PROPRIETARY TO SKYWORKS SOLUTIONS INC. AND MAY NOT BE
COPIED OR REPRODUCED BY ANY MEANS WITHOUT PRIOR WRITTEN APPROVAL FROM SKYWORKS SOLUTIONS INC.
COPYRIGHT © 2012 SKYWORKS SOLUTIONS INC.

CC112X/CC120X
SKY65367 169MHz



Z484-B



1050 Morrison Drive, Suite 100 Ottawa, Ontario, Canada K2H 8K7				DATE Sept-12-2012	
DRAWN	David Phung		Sept-12-2012	DIMENSIONS ARE IN MM	
ELEC ENG	-		-		
MECH ENG	-		-		
PROD					
MATERIAL					
Note # 2					
FINISH					
Note # 5,6,8					
TITLE					
FABRICATION DRAWING					
CODE IDENT NO	SIZE	PART NUMBER		SHEET	REV.
-	D	Z484		1 OF 1	B

SILKSCREEN TOP LAYER